

# Blackline F12

Compact two-way passive system

## features

- ▶ Compact two-way passive system
- ▶ Multi-angle birch ply enclosure
- ▶ User rotatable 80° x 50° horn
- ▶ Top hat fitting for tripod mounting
- ▶ Five year limited warranty

## applications

- ▶ Live club performance
- ▶ Floor monitor
- ▶ Club installs



portable club

The Blackline F12 is a high power, compact 2-way system with a 12" (300mm) LF driver and a 1" (25mm) exit compression driver mounted on a rotatable 80° x 50° constant directivity HF horn. It is the ideal choice for full-range applications calling for an efficient, reliable workhorse that is equally suitable for fixed installations and quick deployment mobile operations.

The F12's multi-angle birch ply cabinet allows it to be used as a highly intelligible floor monitor. This ergonomic design and its rotatable HF horn makes near-ceiling mounting and aiming easy in venues with restricted height. Its ten M8 inserts and four M8 bracket inserts make a variety of mounting methods possible including horizontal or vertical mounting.

The F12 comes with a top hat fitting for tripod mounting. This fitting can also be used as a pole socket when the F12 is used with a Blackline S15 or S18 subwoofer.

A Martin Audio M3 Electronic Controller is available to provide F12/subwoofer crossover and limiter facilities. See the M3 Electronic Controller Technical Specifications for suitable M3 Controller Cards.

Century Point, Halifax Road, Cressex Business Park,  
High Wycombe, Buckinghamshire HP12 3SL, England.  
Telephone: +44 (0)1494 535312 Facsimile: +44 (0)1494 438669  
E-mail: [info@martin-audio.com](mailto:info@martin-audio.com)  
All information is Copyright © 2003 Martin Audio Ltd.

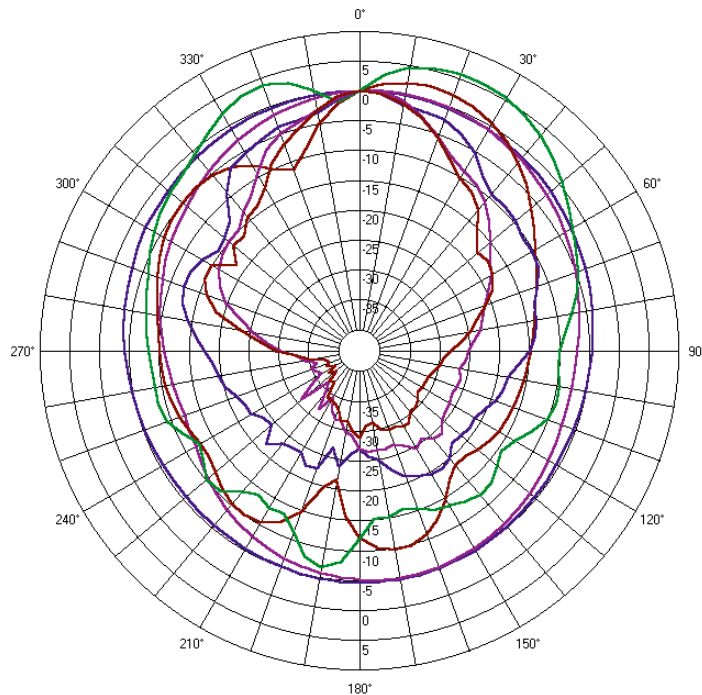


# Blackline **F12**

Compact two-way passive system

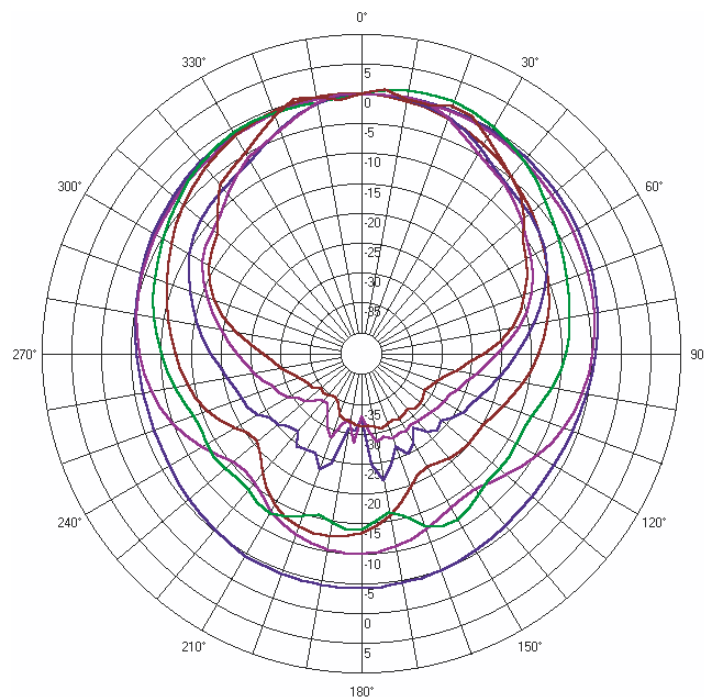
polar plots

portable club



**F12 Vertical**

200Hz & 1/3 oct. smoothing  
400Hz & 1/3 oct. smoothing  
800Hz & 1/3 oct. smoothing  
1600Hz & 1/3 oct. smoothing  
3200Hz & 1/3 oct. smoothing  
6400Hz & 1/3 oct. smoothing  
12800Hz & 1/3 oct. smoothing



**F12 Horizontal**

200Hz & 1/3 oct. smoothing  
400Hz & 1/3 oct. smoothing  
800Hz & 1/3 oct. smoothing  
1600Hz & 1/3 oct. smoothing  
3200Hz & 1/3 oct. smoothing  
6400Hz & 1/3 oct. smoothing  
12800Hz & 1/3 oct. smoothing

Century Point, Halifax Road, Cressex Business Park,  
High Wycombe, Buckinghamshire HP12 3SL, England.  
Telephone: +44 (0)1494 535312 Facsimile: +44 (0)1494 438669  
E-mail: [info@martin-audio.com](mailto:info@martin-audio.com)  
All information is Copyright © 2003 Martin Audio Ltd.

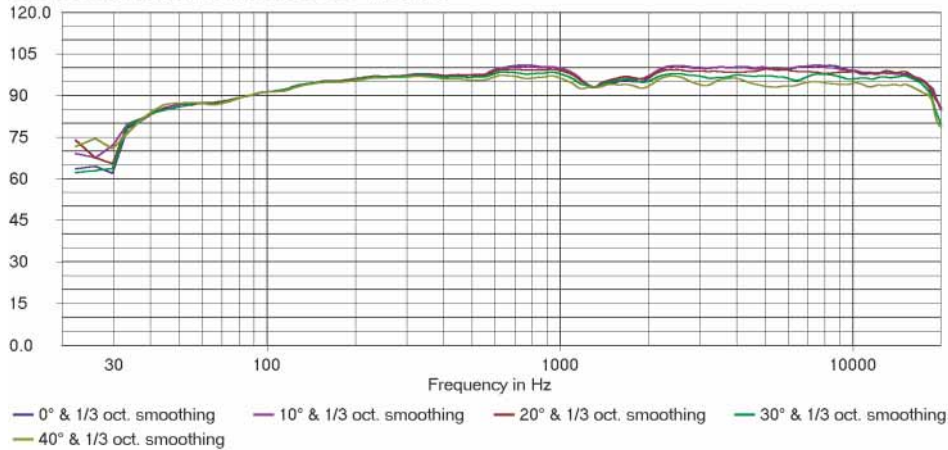


# Blackline F12

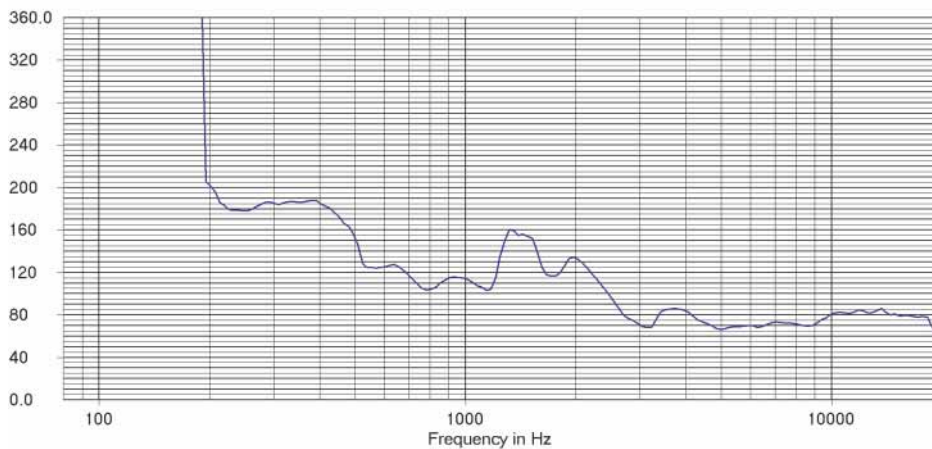
Compact two-way passive system

frequency responses

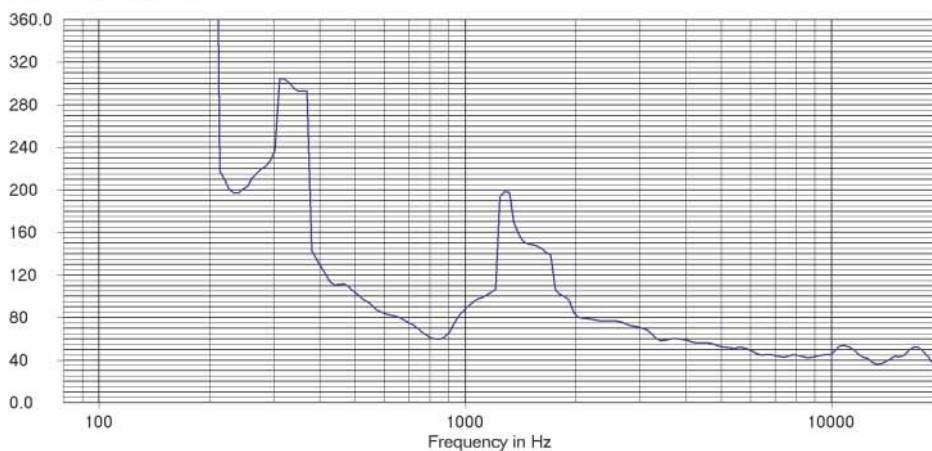
F12 Horizontal Magnitude in dB SPL/2.83V at 1 meter



F12 Horizontal Beamwidth



F12 Vertical Beamwidth



Century Point, Halifax Road, Cressex Business Park,  
High Wycombe, Buckinghamshire HP12 3SL, England.  
Telephone: +44 (0)1494 535312 Facsimile: +44 (0)1494 438669  
E-mail: [info@martin-audio.com](mailto:info@martin-audio.com)  
All information is Copyright © 2003 Martin Audio Ltd.



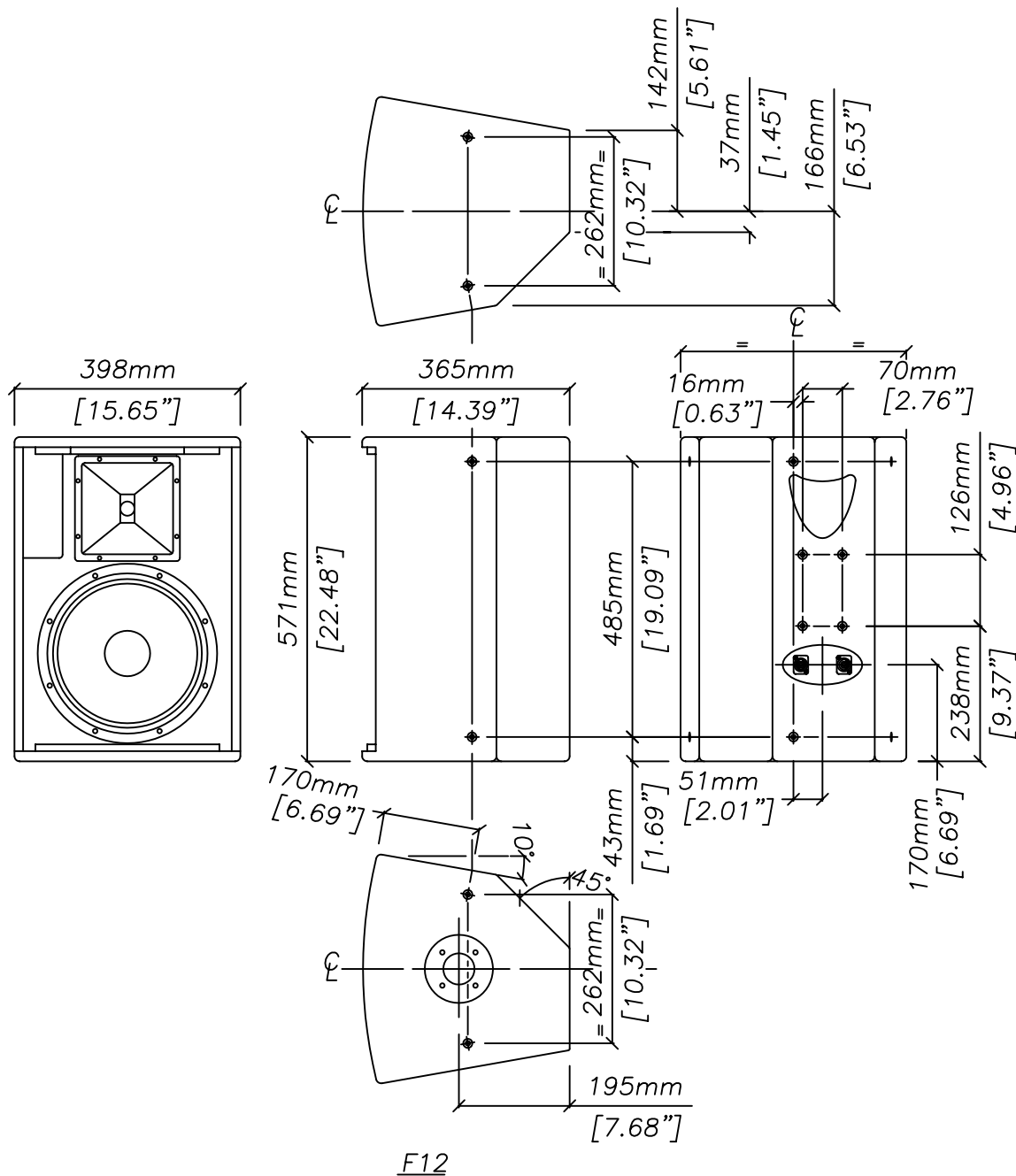
portable club

# Blackline F12

Compact two-way passive system

overall dimensions

portable club



Century Point, Halifax Road, Cressex Business Park,  
High Wycombe, Buckinghamshire HP12 3SL, England.  
Telephone: +44 (0)1494 535312 Facsimile: +44 (0)1494 438669  
E-mail: [info@martin-audio.com](mailto:info@martin-audio.com)  
All information is Copyright © 2003 Martin Audio Ltd.



# Blackline F12

Compact two-way passive system

## technical specifications

TYPE	Compact, two-way passive, multi-angled, vented
FREQUENCY RESPONSE (1)	65Hz-18kHz $\pm$ 3dB
DRIVERS	12" (300mm) bass driver 1" (25mm) exit compression driver
RATED POWER (2)	300W AES, 1200W peak
RECOMMENDED AMPLIFIER	400-650W into 4 ohms
SENSITIVITY (3)	97dB
MAXIMUM SPL (4)	120dB continuous, 126dB peak
IMPEDANCE	8 ohms nominal
DISPERSION (-6dB)	80° horizontal, 50° vertical
CROSSOVER	2kHz passive
ENCLOSURE	38 litre, multi-laminate birch ply
FINISH	Textured black paint
PROTECTIVE GRILLE	Black perforated steel
CONNECTORS	2 x Neutrik NL4
FITTINGS	10 x M8 inserts Top hat fitting 4 x M8 bracket inserts
DIMENSIONS	(W) 398mm x (H) 571mm x (D) 365mm (W) 15.6ins x (H) 22.5ins x (D) 14.3ins
WEIGHT	21kg (46lbs)

## accessories

HTKCT04	Pole
HTKCT05	8mm Shouldered Eye Bolt
HTKFI2Y	Flying Yoke
HTKM20	Wall Bracket (supplied in pairs)
COVFI2	Black Padded Cover

### Notes

- (1) Measured on-axis in half space at 2 metres, then referred to 1 metre.
- (2) AES Standard ANSI S4.26-1984.
- (3) Measured in half space conditions at 2 metres with 1 watt input, using band limited pink noise, then referred to 1 metre.
- (4) Measured in half space conditions at 2 metres using band limited pink noise, then referred to 1 metre.

### Trade Descriptions Act

Due to Martin Audio's policy of continuing improvement, we reserve the right to alter these specifications without prior notice. Martin Audio is committed to refining state of the art sound reinforcement, combining in-depth product and field applications research with advanced manufacturing techniques. Every Martin Audio product is built to the highest manufacturing standards and rigorously tested to ensure that it meets the performance criteria specified in the design.

## architectural and engineering specifications

The loudspeaker system shall be of the two-way passive type consisting of one 12" (300mm) direct radiating reflex loaded low frequency transducer and one 1" (25mm) exit HF compression driver mounted on a user rotatable constant directivity horn in a multi-angled enclosure. The enclosure shall be of a multi-laminate birch ply construction with integral pole mount and threaded inserts for wall and ceiling mounting. Low and high frequency sections shall be integrated by an internal 2kHz passive crossover network.

Performance of the loudspeaker system with its electronic controller shall meet or exceed the following criteria:

Frequency response measured 1 metre on axis shall be 65Hz-18kHz  $\pm$  3dB.

High frequency dispersion at -6dB points shall be 80°H x 50°V.

Power handling shall be 300W AES, 1200W peak.

Rated impedance shall be 8 ohms.

Maximum SPL measured at 1 metre on axis shall be 120dB continuous, 126dB peak.

Dimensions (W) 398mm x (H) 571mm x (D) 365mm (15.6ins x 22.5ins x 14.3ins).

Weight 21kg (46lbs).

The loudspeaker system shall be the Martin Audio F12.

Century Point, Halifax Road, Cressex Business Park,  
High Wycombe, Buckinghamshire HP12 3SL, England.  
Telephone: +44 (0)1494 535312 Facsimile: +44 (0)1494 438669  
E-mail: [info@martin-audio.com](mailto:info@martin-audio.com)  
All information is Copyright © 2003 Martin Audio Ltd.

